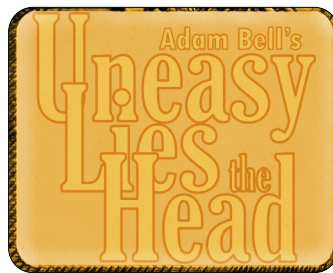


Guide to Playing

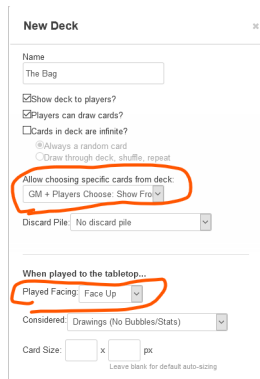
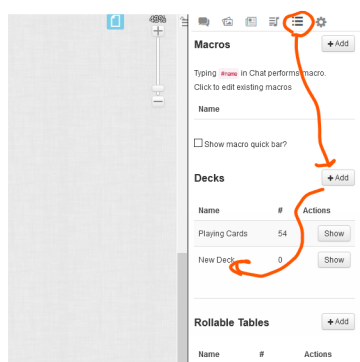


On Roll20

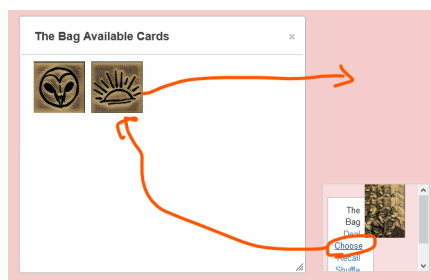
.zip file contents:

- this sheet
- playbooks
- icons
- a playsheet

1. Create your roll20 game and invite your fellow players at your leisure
2. Resize the play area to be pretty big – at least 50x50 squares is where I start. Set the background to a nice pleasing color since you'll be staring at it for the duration of your game.
3. Drag in the playsheet and put it in the middle of the table. Resize it so that it's comfortable.
4. Have all players choose a playbook. Drag those playbooks that are being used into the play area and arrange them so each player has their own little area.
5. For the tokens, we'll be using Roll20's card deck feature. Click the collection icon in your right-hand pane, and then click the "+Add" button next to the word Decks. Then click the "New Deck" that appeared. Rename this deck to "The Bag", as all game text that refers to the bag will be talking about this deck. Align the settings to look like the second screenshot below.



6. Drag in the card back file to the designated section, and then hit "+Add Card". Here you can drag in an image for each card you are adding.
7. For each playbook, create a number of new cards with the token image for that playbook equal to their starting token value. Choose either the textured or plain tokens depending on your taste. Once the image loads, click save changes and repeat. Unfortunately, due to how roll20 works, you'll need to drag in each token individually.
8. Once all the playbook tokens are in the deck, also add one End of Round token and a number of Game tokens equal to the number of players playing.
9. Click the "Show" button back in the collections tab to make the deck appear in your playspace. Hover over the deck, click "Choose" in the menu that appears, and then drag all player tokens to their respective playbooks on the play area.



10. Play the game! Deleting a card in roll20 discards it, so inform all the players that deleting tokens will add them to the bag. When it comes time to draw a token, I like to hit "Shuffle" and then just draw one card from the deck onto the play area. This is done by grabbing the little card that peeks out whenever you're hovered over the card deck. Enjoy!